

*Lifecare 2019*

*HERMITAGE II Patio Homes – Lifecare*



PECONIC  
LANDING

*HERMITAGE II Patio Homes*

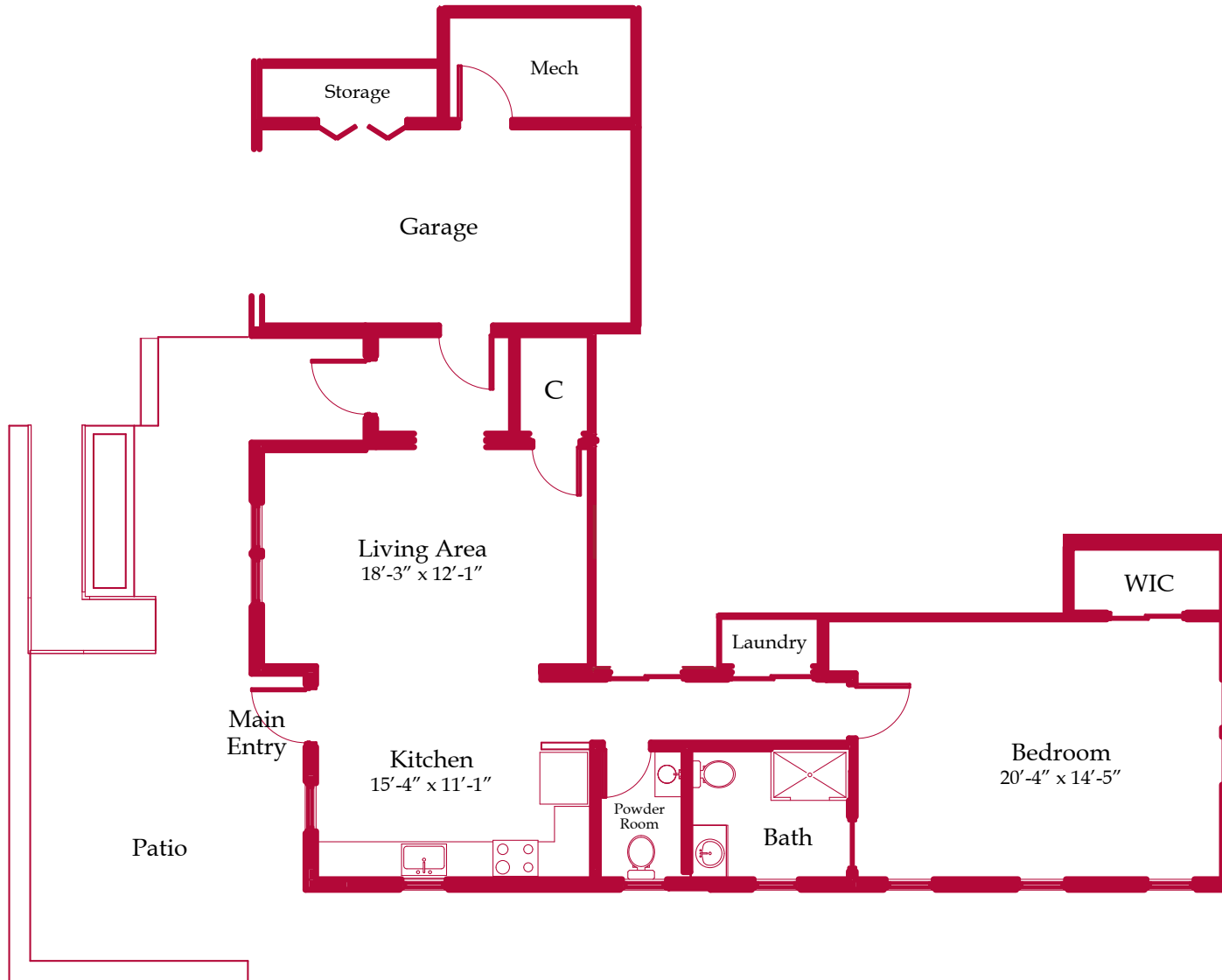
# The Sag Harbor

One Bedroom

953 sq. ft.

\$428,000

Monthly Service Fee \$4,724



**Mech** - Mechanical Closet    **C** - Closet    **WIC** - Walk-In Closet

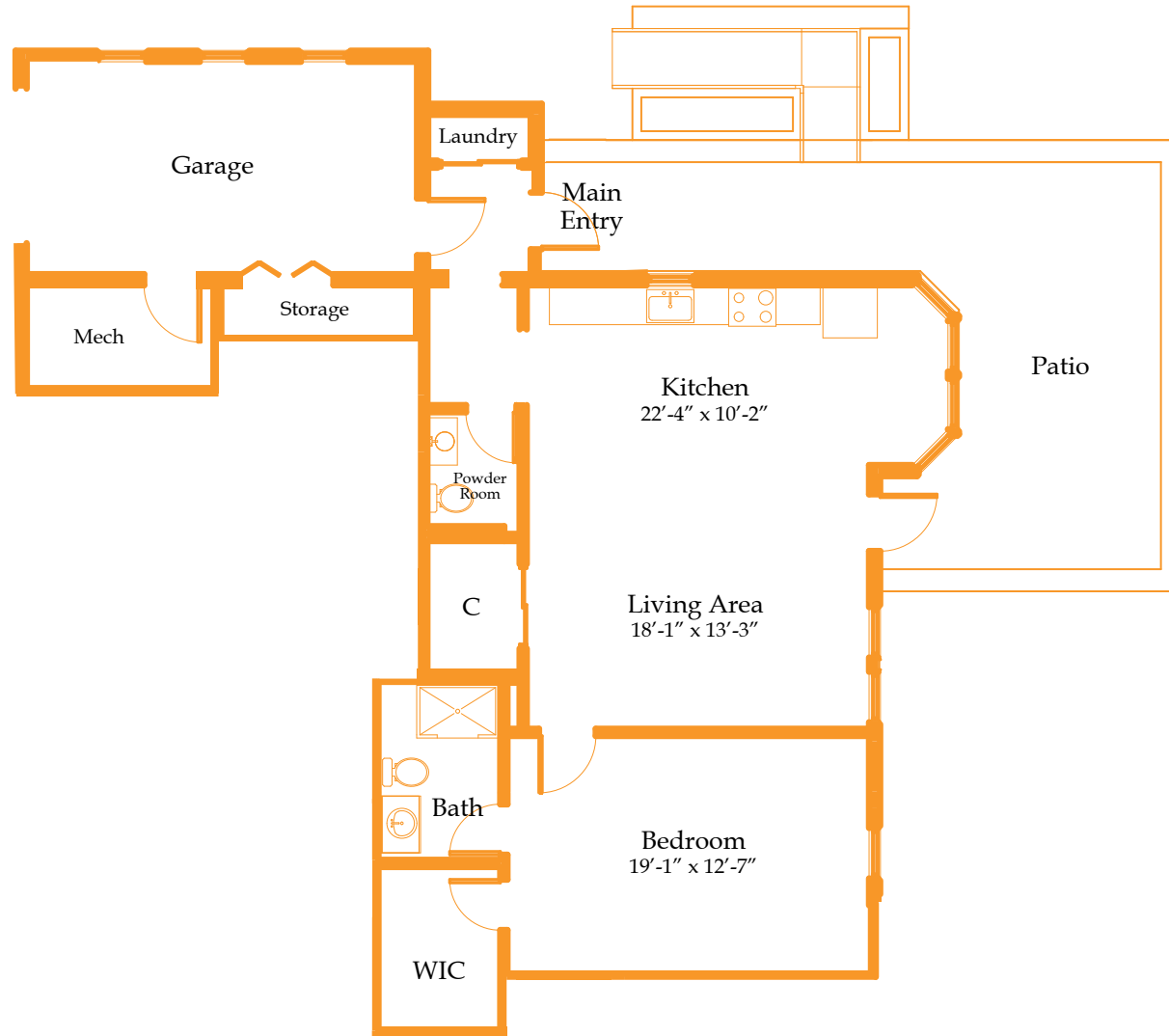
# The Southold

One Bedroom

954 sq. ft.

\$428,000

Monthly Service Fee \$4,724



*Square-footage calculations exclude covered porches and have been rounded off.*

*Listed fees are for 2019 Type A Lifecare Contract and apply to single occupancy. Second person monthly service fee is \$1,925.*

*Purchase Price includes \$48,000 First Person Healthcare Reserve Fee. A second person requires an additional Healthcare Reserve Fee of \$48,000.*

## *Our Mission*

Peconic Landing is a community that provides a vibrant and fulfilling lifestyle through choice and opportunity. We encourage our members to pursue their interests and passions to the fullest for continued growth toward successful living.



1500 Brecknock Road  
Greenport, NY 11944

(631) 593-8242 • Toll Free (888) 273-2664

[www.peconiclanding.org](http://www.peconiclanding.org)

